

Year 3 Science

Plants

I can identify, locate and describe the function of the roots in plants.

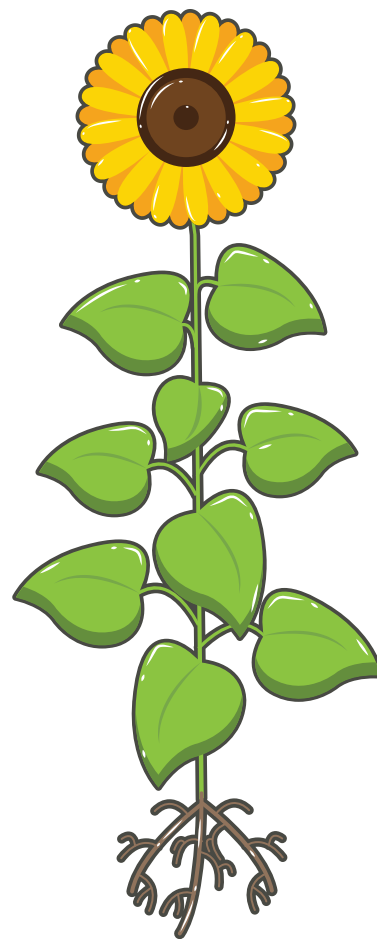
www.grammarsaurus.co.uk



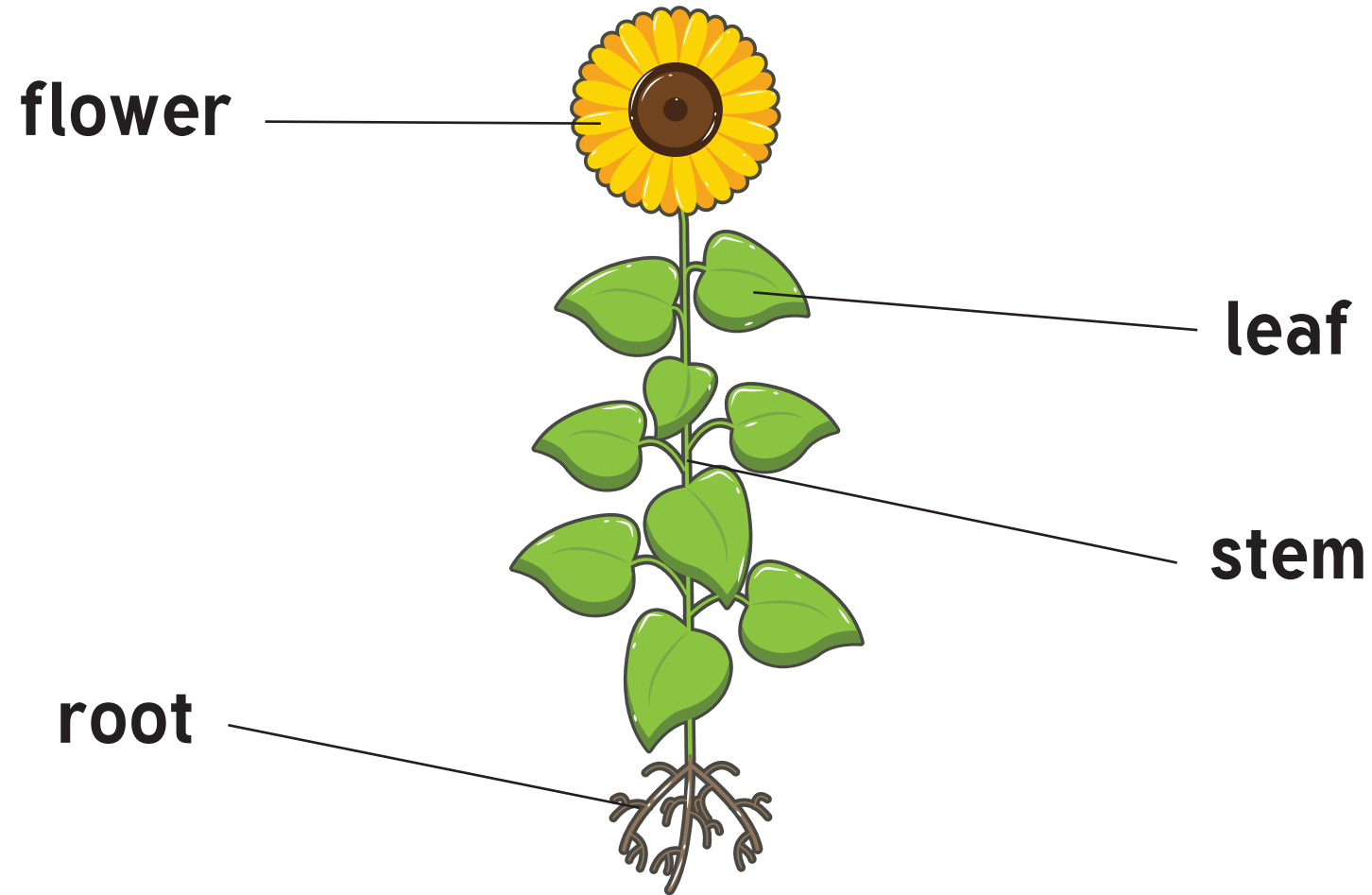
Grammarsaurus

Parts of the Plant Recap

Can you remember the parts of the plant from last lesson?



Parts of the Plant Recap



Roots

Today, we are going to focus on the roots of a plant.

What are roots?

What do they do?

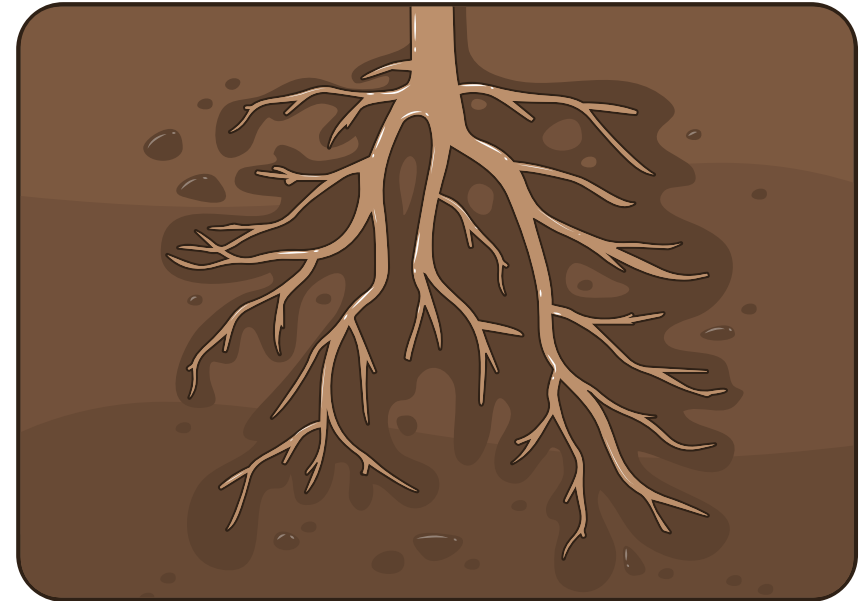
Why do plants have them?



Roots

The roots of a plant have a number of different jobs.

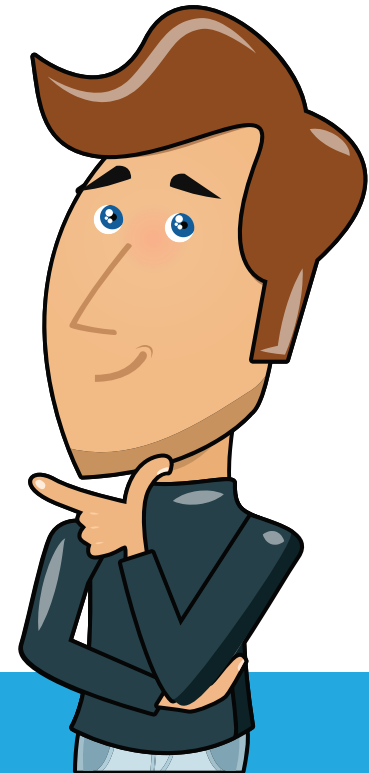
- *They take up water and nutrients from the soil.*
- *They keep the plant steady.*
- *They keep the plant upright.*
- *They 'anchor' the plant.*



Roots

Plants in the desert or in sandy areas have longer roots.

Why do you think this is?

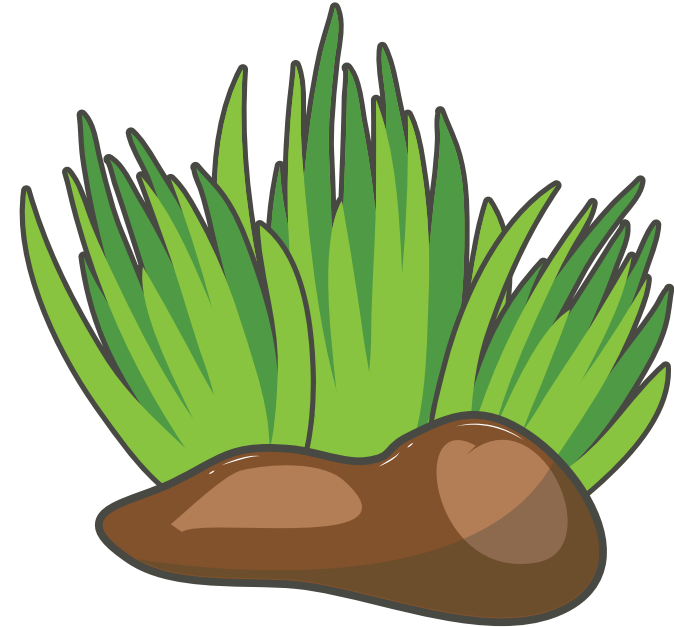


Roots

Plants in the desert or in sandy areas have longer roots.

Why do you think this is?

The soil is often dry in the desert due to the heat. The plants have longer roots as they often have to search further for water and nutrients in the soil.



Class Activity

We are now going to collect some weeds from our school grounds so we can look more closely at the roots of a plant.

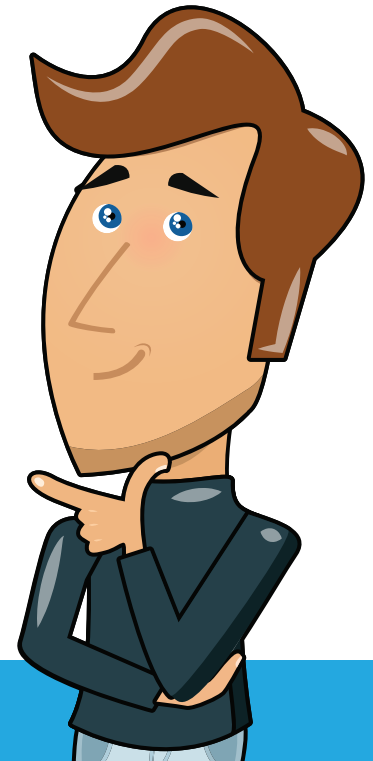
We are only going to collect weeds as they are unwanted plants. When we pull them up, we need to do it carefully so the roots are not damaged.

When we are pulling them up, you will be able to feel how strong the roots are at anchoring the plant into the ground.

Independent Activity

Throughout our topic, we will be recording what we have found out about plants. Then when we have finished our topic, we will put all our work into a booklet and Y6 will be able to use them to revise for their SATs tests.

The third page of the booklet will be an observational drawing of roots.

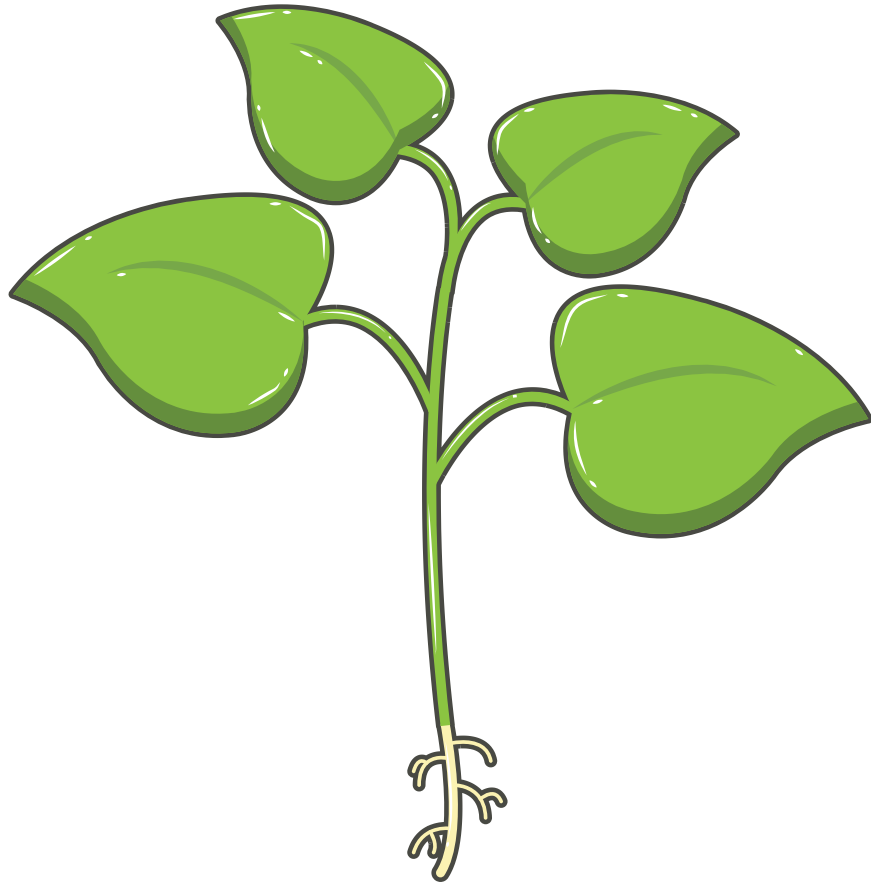


Independent Activity

On this page of your booklet, you need to draw a detailed drawing of the roots of the plant.

You will be using magnifying glasses to look at the roots first.

Thinking Time!



This picture shows a tall plant with short roots.

What could be the problem with a tall plant having short roots?