



Newsletter 2nd December 2021

Thank you for all completing the online applications for tickets for the Christmas Play and Carol Concert. We will continue with our plans for a reduced capacity audience at both events unless official guidance changes or we have issues locally. The children are really enjoying all of the rehearsals and it will be great for them to be able to show what they have practised.

There have been lots of exciting activities in school over the last week. We all enjoyed the Operation Ocelot quiz and film club last Thursday and Friday. All of the money raised will go directly to this very worthwhile campaign. There is a picture below of the winning quiz team!

Snowy Owls have also enjoyed having the planetarium in school to support their topic learning. They have also made some spectacular papier mache planets!

The Christmas post box has arrived. It will be on the playground in the morning when dry, or available in school at other times. The Christmas tree for the playground is also here and will be put up shortly. We hope to use this as the centrepiece for our outdoor carol singing on the last afternoon of term. The Friends of the school have also planned and organised a number of lovely activities for the Christmas week– including a visit to the Village Inn for a pizza lunch for the children.

Operation Ocelot Quiz Afternoon, Thursday November 25th

Well done to our winning team– Scarlett, Oscar, Flora and Lucas!
Many thanks to Mr and Mrs McEvoy for organising and running it and to the parents who attended to join in with some of the teams.

In total we have so far raised an incredible **£365.00**

<https://www.justgiving.com/fundraising/lmps-opoc>





The Friends of LMPS are very kindly funding a whole school pizza and chips lunch at The Village Inn on Tuesday 14th December.

If your child really does not want to take advantage of this fantastic offer, then they will need a home packed lunch instead. Please inform us of this by Monday 6th December using the google form link below.

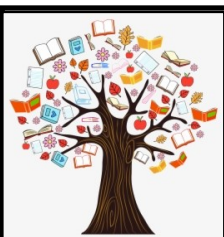
If your child has any special dietary requirements please also inform us using the form link below by Monday 6th December.

<https://forms.gle/FJpnJJvLoiv9KdW9>

Norwich SSP– Year 5/6 Matchday 3



Well done to all the children who took part– and the staff who volunteered to look after them on a very cold evening!



Headteacher Knowledge Organiser Quizzes!

The links for this half-term's quizzes are:

Snowy Owls:

<https://forms.gle/DamYh977FhJdiCUVA>

Barn Owls:

<https://forms.gle/UeayJN42RYHUHSdM6>

Eagle Owls:

<https://forms.gle/J8fpWhk19DibMsbBA>



Good luck! Prizes are again available for successful entrants!

Christmas Rehearsals!



Barn Owls hard at work!

Santa Dash– Friday December 10th

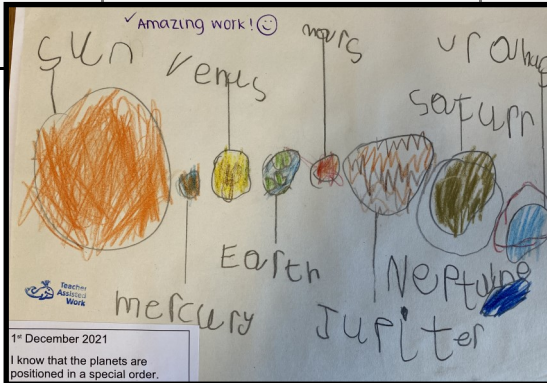
We've had a couple of parents ask about this event. It's a fun event which lots of schools are joining in with virtually this year. The idea is for all the children to have a fun run at school wearing a Santa Hat (if they have one). We've combined it with Christmas jumper day this year too for double fun!



Around the classrooms

This week:

Owlets



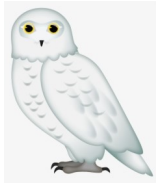
Barn



Labelling the Planets
(Y1 Snowlet)

Calligrams

Snowy



Eagle



Visiting the Planetarium

Glockenspiels

Next week:

Owlets



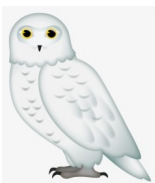
Phonics Assessments
One More
Christmas Crafts and Decorations
Preparing for the Christmas Play

Barn



Shape Poetry
Subtraction
Assessment Week
Preparing for the Christmas Play

Snowy



Place Value within 20 (Y1)
Assessment and Review (Y2)
Christmas Poetry
Tim Peake
Space Art
Christmas Story

Eagle



3D shape and nets
Making Christmas Cakes
Research project– history/
computing– leisure in the C20
Learning instruments for the Christmas play



Sam age 9
Benji Age 9
Elizabeth age 5
Sophia age 9

ATTENDANCE MATTERS

every school day counts.

Last week's attendance was 95.80%

Years 1 & 5 achieved 100% attendance

Attendance year to date is 96.10%



Owlets - Oscar & Amber

Snowy - Lucas, Grace & Thomas G

Barn - Stanley, Sophia, Benji & Grace B

Eagle - Riley, Amelia, Molly B, Mollie D

Special mention to Edward (2) and Emily (5), Ollie (2) and Lenny (R) for all taking part in extra sponsored activities to support Operation Ocelot- including sponsored walks, litter picks and recycling

Sadly **Jo Runeckes** will be leaving Little Melton Pre-School Nursery on Friday 17th Dec after 15 years.

We would like to present her with a Thank you card and would like as many past parents/families/children to sign the card and write a message for her.

The card will be in the office from Tue 7th Dec for 1 week where you can sign it at the front door.

Many thanks for helping us to make her last day a memorable one.

Ali Canning.



N.B. These dates/times could be subject to change
Tuesday 7th December - Sugar collection
Wednesday 8th December - Little Melton Church carols 1:30p.m - Garnet and Citrine
Thursday 9th December - Little Melton Church carols 1:30p.m. Emerald and Topaz
Friday 10th December - Christmas Jumper Day
Friday 10th December - Santa Dash
Friday 10th December - Film Club 3:15p.m
Mon 13th December - Christmas play performance 1:30p.m
Tues 14th December - Christmas play performance 9:30a.m
Tues 14th December - Friends Christmas pizza lunch at The Village Inn
Wed 15th December - EATS Christmas lunch
Wed 15th December - Christmas play performance 1:30p.m
Thurs 16th December - Christmas play performance 9:30a.m
Thurs 16th December - Panto p.m.
Friday 17th December - Carols around the tree on the playground 2p.m. All welcome.

Christmas Holidays

20th December 2021 - 4th January 2022 (Inc. extra day for Queen's Jubilee)

Staff training Day - School Closed
Wednesday 5th January 2022

February Half-term
14th to 18th February 2022

29th March - 1st April Eagle Owls PGL Residential

Easter Holidays
4th April to 18th April 2022

Staff Training Day - school Closed
Tuesday 19th April 2022

June Half-term
30th May - 3rd June 2022

Monday 20th & Tuesday 21st June - Year 6 Bikeability

Thurs 23rd June - School photos

Wed 29th June - Year 6 transition day to Hethersett Academy

Thurs 30th June - Year 6 transition day to Hethersett Academy

Summer holidays commence
25th July 2022

Yours faithfully

Alex Pritchard

Headteacher



LMPS Friends Christmas Hamper Raffle

Children will be invited to come to school in non-school uniform **THIS FRIDAY 3rd of December**, and in return, the Friends Committee ask for children to bring in a food/drink item as a donation for our Christmas Hamper Raffle.

ONLY ONE ITEM PER HOUSEHOLD PLEASE, SO YOU DO NOT NEED TO DONATE MULTIPLE ITEMS IF YOU HAVE MORE THAN ONE CHILD AT THE SCHOOL

Donation examples include: chocolates, biscuits, confectionary, wine/beer/spirits, fudge, jams, pickles, mince pies and Christmas puddings!

With the items donated, we will be making up Christmas Hampers and parents & families will be invited to purchase raffle tickets in the final weeks of term!



NORFOLK CHRISTMAS TREES

Sat Nav: NR9 3BW



Freshly cut Norway Spruce and Nordmann
Fir trees from our own plantations.

Come and select your tree where you can
see and smell how fresh they are.

Also available:-

Decorations ♦ Tree Stands
Pot Grown Trees ♦ Lights
Holly ♦ Mistletoe ♦ Wreaths

Open Monday to Saturday 9am-6pm
Sundays 10am-4pm

Check website for opening date
www.norfolk-christmastrees.co.uk
Plenty of free parking

Find us just outside Norwich
- signed off the Watton Road (B1108)



Great Melton Estate, Hall Farm, Pockthorpe Road,
Great Melton, Norwich, Norfolk NR9 3BW
Telephone: 01603 810269
E-mail: sales@norfolk-christmastrees.co.uk
www.norfolk-christmastrees.co.uk





Christmas School Sugar Collection

For the homeless and hungry, families in crisis, and those seeking refuge from domestic violence in East Anglia.

Dear Parent/Carer,

This Christmas our school will be collecting sugar to support a local appeal, "Sugar for Shelters".

Every year Norfolk and Suffolk school children donate sugar to help homeless and needy people throughout the county at Christmas. (The total last year was an amazing 6 tonnes!).

- Sugar for Shelters is a part of the Buckingham Emergency Food Appeal (BEFA). This NORFOLK farm based Christmas Food Charity, founded by Norfolk farmer Mike Buckingham in 1985, provides the food for more than 5000 Christmas dinners.
- Schools help Sugar for Shelters by collecting bags of sugar for the homeless, needy and vulnerable in local shelters.
- Huge amounts of sugar are needed and make a REAL difference in Shelters and Food Kitchens throughout Norfolk and Suffolk in the cold days of winter and particularly over Christmas.
- Collecting sugar is simple and affordable and helps children focus on the spirit of giving at Christmas.
- British Sugar will match the schools' donations of every kilo of their brand of sugar (Silver Spoon) up to 2000kg!

We do hope that you and your child can help the homeless and needy by bringing in a bag of sugar to school by December 7th

Thank you in anticipation for supporting the Appeal at this special time of the year.

Yours sincerely,
Mr Pritchard



Little Melton Church Christmas Art Project 2021

Create hanging decorations from recycled materials. Try not to use materials that would normally go in the green bin if you can!

The Church will be open every day from mid November and the decorations need to be delivered there by the 3rd December.

All will be for everyone to see in the Church at the Christmas Fayre 2 til 4pm on Saturday 11th December





Victory Façade's
production of



Disney and CAMERON MACKINTOSH's

MARY POPPINS JR.

Omiston Victory Academy
Middleton Crescent
New Costessey
Norwich
NR3 0PS

A musical based on the stories of P.L. Travers and the 1964 Disney film

Original Music and Lyrics by
Richard M. Sherman and Robert B. Sherman

Book by
Julian Fellowes

New Song and Additional Lyrics and Lyrics by
George Bell and Anthony Brown

Costume Designers
Cameron Mackintosh

Set and Costume Designers
Cameron Mackintosh

8th - 11th December 2021 7.30pm
11th December 2021 2.30pm

£10 Adults / £8 Concessions

Book Online: www.omistonvictoryacademy.co.uk/booking

Enquiries: 01603 742310

Email: boxoffice@omistonvictoryacademy.co.uk

Disney and Cameron Mackintosh's Mary Poppins Jr. is a registered trademark and all other names and logos are supplied by
Mackintosh Mackintosh Ltd. New York, NY 10018, USA. © 2021 Mackintosh Ltd.



SANTA CLAUS IS COMING TO

HETHERSETT!

**FACEBOOK PAGE -
@SantaHethersett**

**FIND OUR ROUTE ON
OUR FACEBOOK
PAGE!**



**18th Dec 4pm
Start**

**Join us for Carols at the King's Head after the tour
where fabulous food will be available**

CHECK OUT OUR FACEBOOK PAGE FOR FULL DETAILS!!



King's Head - Hethersett