

Little Melton Primary School



School Lane, Little Melton, Norwich, Norfolk NR9 3AD
Tel: 01603 811446 • Email: office@littlemelton.norfolk.sch.uk
Head Teacher: Alex Pritchard



Newsletter 9th December, 2022

Dear Parents,

Thank you all for your support, as we reach the final week of a busy and productive term. We are all looking forward to showing you this year's Christmas Production next week. Tickets have gone home with the children today– please email the office if any queries and we will endeavour to sort them out.

This week we have enjoyed our carol services at the church. It is always a valuable experience for the children attending, and also the older children who are given the opportunity to read out loud to a large audience in a formal setting. Thank you to everyone who braved the elements to accompany the children on the walk up to the church and back.

Next week, in addition to the performance, we are looking forward to visiting the Village Inn for a Christmas lunch. Our caterer, Eats, are also providing a Christmas lunch on Thursday in school.

Finally, as part of our development of Science in the school, please have a look at the information about some possible **Science activities** that the children could have a go at during the **holidays**. Please send any pictures of the children doing this to:

mrsbushell@imp.org.uk



Thank you!

Many thanks to Perdy's Mum and Dad for kindly donating the lovely Christmas tree on the school playground.

The tree came from Norfolk Christmas Trees at Great Melton, and we will continue to add decorations to it, over the remainder of term.

Goodbye!

At the end of term, we will be saying a sad goodbye to Mrs Hamilton, who is leaving us for an exciting opportunity at a school much nearer her home in west Norfolk.

During her time here, Mrs Hamilton has contributed enormously to the development of our language provision, and we will all miss her.

I am very pleased however to welcome **Mrs Harvey** to the school as her replacement in January, joining us from Wicklewood Primary. Mrs Harvey has a strong background in Music, performing arts and languages, and I am sure will make a highly effective contribution here too.

SCIENCE FUN AT HOME



Have some fun at home with these science activities from **Science Sparks** and the **Primary Science Teaching Trust**



BEFORE YOU START! Please read through this with an adult:

- * Make sure you have read the 'IMPORTANT NOTICE' on the back of this page.
- * If you have a space outside that you can use safely, then you can do the 'Try this outdoors' activity outside. Don't worry if not as you could still do it indoors.
- * Talk to your adult about sharing the science you have done and if they want to share on social media, please tag **@ScienceSparks** and **@pstt_whyhow** and use **#ScienceFromHome**

SCIENCE WITH ICE

1 TRY THIS INDOORS ICE RESCUE

Place a small plastic toy or figure (Lego works well) into the container and fill to almost the top with water. Leave in a freezer or ice compartment in the fridge until the water is frozen. Remove the container and leave for 5-10 minutes until the ice loosens and then tip it out onto a plate or tray.

You will need

- * A container
- * Small plastic toy
- * Water
- * Freezer (or ice compartment in the fridge)
- * Salt
- * Warm water
- * Ice cubes

WHAT DO YOU NOTICE?

Things to talk about ...

What happens when you pour a little bit of warm water onto the ice? What happens if you put salt onto the ice? What do you think would be the fastest way to rescue your toy from the ice? What could you do to find out? Are bigger toys easier to rescue from the ice than smaller toys?



Would you like to try these activities at home during the holidays?

Send any pictures to mrsbushell@imp.org.uk

2 TRY THIS OUTDOORS ... MELTING ICE

Freeze several small ice cubes or shapes of the same size. Put them in separate containers and choose different places to leave them. If you can go outside, you could put one in the shade, one in the sunshine and also leave one inside. You could also try making ice cubes out of different liquids like milk, vinegar or cooking oil.

WHAT DO YOU NOTICE? Things to talk about ...

Where does the ice cube melt the most quickly? Why might that be? Can you find the place where the ice cube will take the longest time to melt? Or the shortest time to melt? What happens with frozen cubes made from different liquids?



3 WHAT IS THE SCIENCE?

Water can be a solid, liquid or a gas. A liquid turns into a solid (freezes) when its temperature drops below its freezing point. For water this is at zero degrees Celsius. Ice melts when its temperature rises above its freezing point. Ice melts faster when salt is added as the salt makes the freezing point of the ice lower. Different liquids have different freezing points. Oil freezes at a lower temperature than water, so an 'ice cube' made of oil will melt faster than one made of water.

Did you know? Fresh ice feels sticky because it immediately freezes the moisture in your skin, making it feel sticky to touch.

4 MORE ACTIVITIES YOU COULD TRY

MAKE ICE CREAM IN A BAG! <https://www.science-sparks.com/how-to-make-ice-cream-with-ice-and-salt/>

WATCH A VIDEO ABOUT HOW PLANTS SURVIVE IN ICY CONDITIONS

<https://wowscience.co.uk/resource/adaptation-of-plant-life-to-extreme-cold-temperatures/>

FIND OUT ABOUT ICEBERGS AND WHAT HAPPENED TO THE TITANIC

http://www.nicurriculum.org.uk/docs/key_stages_1_and_2/areas_of_learning/the_world_around_us/activity5.pdf

TAKE A SCIENCE SELFIE! Maybe you could show other people what you have been doing?

IMPORTANT NOTICE: Science Sparks and The Primary Science Teaching Trust are not liable for the actions or activity of any person who uses the information in this resource or in any of the suggested further resources. Science Sparks and The Primary Science Teaching Trust assume no liability with regard to injuries or damage to property that may occur as a result of using the information and carrying out the practical activities contained in this resource or in any of the suggested further resources.

These activities are designed to be carried out by children working with a parent, guardian or other appropriate adult. The adult involved is fully responsible for ensuring that the activities are carried out safely.

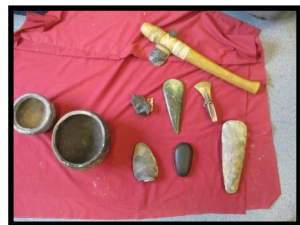
Would you like to try these activities at home during the holidays?

Send any pictures to mrsbushell@lmp.org.uk

Snowy Owls– Living History Day– Queen Victoria Visits for a Feast!



Barn Owls Living History Day– Gressenhall Stone Age Adventure!



Eagle Owls Living History– Viking Day!



Owlets. Christmas





Knowledge Organiser Quizzes, November 2022

Children can enter using the links below.

Copies of the accompanying Knowledge Organiser are all also on the school website at:

<http://www.littlemeltonprimaryschool.co.uk/curriculum/topic-webs-for-parents/>

Snowy Owls: Once Upon a Time

<https://forms.gle/7Mk6gDDpxuV92E9g9>



Barn Owls: Skeletons

<https://forms.gle/FyqJknpgEnPdVHuR7>



Eagle Owls: Vikings and Anglo-Saxons

<https://forms.gle/zzWnUQAnn6ojHMhDA>



Christmas with the Friends of Little Melton Primary School

The run up to Christmas is always busy and we have a lot of exciting events planned for the festive period...below is a summary to stick on the fridge door!

- **14th - 29th November** - Bring in your (clean) pre-loved Christmas jumpers to school to donate to the Friends.
- **25th November**- Non-uniform day - please bring in something for the Christmas hampers. (Raffle tickets to win one of the hampers will be available to purchase at the Christmas play performances).
- **1st December** - Come along to the school hall after school to buy a Christmas jumper for just £2.
- **9th December** - Christmas Jumper day in aid of Save the Children - wear your new (to you) jumper with pride!
- **12th December** - Christmas lunch for the children at 'The Village Inn' provided by the Friends of Little Melton.
- **13/14th December** - Buy your raffle tickets at the school play performances
- **15/16th December** - hamper winners announced collect their prizes.



FRIENDS OF
LITTLE MELTON
PRIMARY SCHOOL



FRIENDS OF
LITTLE MELTON
PRIMARY SCHOOL



Christmas Jumper Shop!

Step 1:

Bring into school your pre-loved (clean!) Christmas jumpers by **28th November**



Step 2:

Visit our pre-loved Christmas jumper sale on 1 December and buy a jumper for just **£2**

Step 3:

Wear your Christmas jumper to school with pride on **9th December** for the Christmas jumper day!





Recent or Upcoming Birthdays:

Benji-10

Sophia-10

Thomas C- 7

Elliot E-5



Wednesday December 7th & 9th- Carols
Friday December 9th- Christmas Jumper Day
Monday December 12th- Lunch at Village Inn
Tuesday December 13th & Wed 14th- Performances

Monday December 19th-Tuesday January 3rd-
Christmas Holiday

Children return- Wednesday January 4th



Last week's attendance was: 95.47%

Attendance year to date is: 94.48%

Uniform

Any parents wanting to buy uniform can purchase it direct from this website:

<https://www.superstitch86.co.uk/product-category/schoolwear/primary-schools-academies/little-melton-primary-school/>



Owlets: Jacob (phonics) Esme (writing)

Snowy: Oscar (helpfulness) Jack (drawing) Thomas (writing) Tabi (helpful on own initiative)

Barn: Excellent behaviour at Gressenhall

Eagle: Logan, Josh, Benji, Sophia (Dragonology) Tom B (amazing Science experiment)

Housepoints: Josef 1200 Sophia 1000 Sophie F 1000 Verity 500

NAVY LITTLE MELTON PRIMARY SCHOOL SWEATSHIRT



RED LITTLE MELTON PRIMARY SCHOOL SWEATSHIRT



NAVY LITTLE MELTON PRIMARY SCHOOL CARDIGAN



RED LITTLE MELTON PRIMARY SCHOOL CARDIGAN



Nut Free School




A general reminder that we operate a nut-free policy in school for all food. Please be particularly careful with any food provided to celebrate birthdays as some chocolate can include traces of nuts. We do have some children with severe allergies in our school and we obviously want to look after them to the very best of our ability.

Signature

Yours faithfully,



LITTLE MELTON CHURCH CHRISTMAS FAYRE



To do;
Buy Gifts,
Enjoy Festive Food and music,
Entertain the children with Games,
Buy Christmas Decorations,
Let the kids meet Santa,
Win on Raffle, Bottle Stall & Children's
tomboles

**Sunday 11th
December
2-4pm in the church**





Norwich Citadel Band of the Salvation Army

Carol Concert

Thursday 15th December 7.30pm

All Saints Church, Mill Road, Little Melton

Tickets £5 Including refreshments

Call 01603 812280 or 01603 812230

Text 07979 863488

E-mail ; mail@friends-of-lmc.co.uk

Kids' Christmas Activities

In Norfolk



★
★ Come and enjoy
a mince pie with
a hot drink

★ Contact us by
email if you
need more
information

cspcust@norfolk.gov.uk

ACTIVITIES YOU CAN TAKE PART IN

The Big Norfolk
Holiday Fun winter
programme is now
open for bookings!
Fun and creative
activities for the
whole family.
Free and small fee
places available.

★ www.activenorfolk.org/public/bignorfolkholidayfun



South Children Christmas Event

★
United Reformed
Church, Mere
Street Diss,
Children Christmas
Event-
presents/music/
games
Saturday
17 December
10:00-12:00

Norwich Christmas Event at the Forum!

★
Light refreshments, live
music, crafts, and a special
visit from Grandfather
Frost and Lady Winter.
Children can dress up if
they wish Thursday 22
December from 13:00-
15:00 -to book a place
email:
cspcust@norfolk.gov.uk
FREE ENTRANCE

★
Christmas Class Dance
City College, NR2 2LJ
Book your space online
www.maysperformingarts.co.uk
11 December 10:30-12:30
Free Entrance



WHERE?

North Norfolk Santa's Grotto

★
Cromer Community Centre
- every child will receive a gift and a
letter from Santa - £2.50 per child -
cash only. Balloon modelling available.
3 December 11:00 to 13:00 and 14:00
to 15:45 sessions

Cromer Pier Christmas Show 2022

★
www.cromerpier.co.uk
Variety show with special effects,
music, acts and dance for all the
family
26 November to 30 December

Kings Lynn & West Kids Christmas Party & Disco!

★
William Bert Social Club
disco, party games, fluffy snowball
fight,
pre-book your places from 1
November,
cost £5
18 December 15:00-17:00

Broadland

★
Reepham Festival of Lights
Market Place,
food stalls, Christmas Tree
Festival
4 December 14:30-17:30

Great Yarmouth Area

★ Rollesby Christmas Craft and Gift

Fair - raffles, refreshments at
3 St George's Church,
Rollesby on
3 December 11:00 - 15:00 -
FREE ENTRANCE

★ Caister Winter Wonderland

Experience at the Allendale
Road Playing Field - Grotto,
rides, crafts, bus ride,
pantomime, snow machine,
some rides £1 and much more.
3 December 11:00 - 17:00 -
FREE ENTRANCE

★
Hemsby Christmas Fair
at Village Hall - crafts, play bus,
rides, food, and lots more,
1 December 15:00 - 19:00

Breckland

★
Swanton Morley Village Hall
Santa in his snow globe,
nerf shootout, kids craft table
and much more
3 December 10:00 - 16:00





After School Tennis Club

National Tennis Association have been delivering tennis coaching at schools in Norfolk since 2004. The after school sessions are a great introduction to the game and many of the county's most successful players started in our after school clubs.

In after school club sessions pupils will develop footwork, coordination, ball and racket skills working through a structured curriculum.

Little Melton Primary Tennis Club Details

Fridays- 5 weeks (13th Jan-10th Feb)

Year 1-3

3:15 - 4:00pm

Cost - £20

How to Enrol?

For more information and booking please click or visit the below link.

www.nationaltennis.org.uk/schools

These sessions fill up very quickly therefore it is important to book your place quickly, we operate a first come, first serve basis.

Once you have booked on our website you will receive a confirmation of your place.

If you have any questions regarding the tennis club please contact us:

email: schools@nationaltennis.org.uk

tel: 0330 551 9496



Little Melton Village Hall, Mill Road, Little Melton
01603 812362

www.littlemeltonpreschoolnursery.co.uk

Registered Charity No 1028459

Email – info@littlemeltonpreschoolnursery.co.uk

Our Pre-School is run by a team of experienced, qualified, friendly staff. We provide quality care and education through child-led play.

Open Monday-Friday during term time

Rated 'Good' by Ofsted

Open to children from 2 ½ - School age

Providing quality childcare for over 30 years

Please contact us to arrange a visit on the details above.

This organisation is committed to safeguarding and promoting the welfare of children and young people and expects all its staff and volunteers to share this commitment.