

Little Melton Primary School



School Lane, Little Melton, Norwich, Norfolk NR9 3AD
Tel: 01603 811446 • Email: office@littlemelton.norfolk.sch.uk
Head Teacher: Alex Pritchard



Newsletter 10th November 2023

Dear Parents,

First of all, it was great to see many of you at the recent Harvest Festival Assembly in school and many thanks also for the amazing amount of food donations made to support the Salvation Army and the local causes that they focus on.

Barn Owls enjoyed a fabulous day at the Castle Museum in Norwich on Tuesday as part of their Ancient Egyptian topic. The children were very engaged and well behaved throughout the visit and highly enthused when they returned. There are some pictures elsewhere in the newsletter. Snowy Owls are also visiting the Playhouse Theatre next Wednesday to see the Gruffalo's Child!

Children in Owlets enjoyed a very informative visit from Cats Protection on Tuesday. The children learnt about how to care for pets and about the valuable work that the charity do in the local area, and also asked some excellent informed questions too and I know that our visitor was very impressed with them.

Rehearsals for the Christmas performance are now in full flow. The children in Barn Owls took part in a series of auditions at the start of half-term, and are now busily learning their lines. The dates for the Christmas play, and other events, can all be found later in the newsletter.

Also on a musical theme, children in Barn Owls enjoyed a brilliant visit from two musicians from the Norfolk Music Service last week, who both played some live music and talked to the children about learning instruments and basic musical theory.

Well done to all of the children involved in the inter school cross-country event at the UEA last Friday. We took our largest team ever, and the children were an absolute credit to themselves in the way that they all showed perseverance and character in all completing the long course without giving up. In addition we had an amazing 7 children who managed to finish in the top 10 of their races and have hence qualified for the area finals at Thetford later this year! Again, there are some pictures elsewhere in the newsletter.

This week in school we have set up a Travelling Book Fair in the school hall. This can be accessed before and after school by parents. Thank you also for your support with the Remembrance Day poppy appeal. The Eagle Owls children have done a super job in looking after the stall, and we held our annual 2 minute silence in remembrance at 11am today.



Lego Club, November 2023

Parents Evening Dates

Sign up sheets for parents evening are now available. If you are unable to come into school to sign up for a slot, or would prefer a Zoom appointment to be arranged on a different date, please email office@littlemelton.norfolk.sch.uk. Year 1 dates are slightly different because we have a member of staff called up for jury service!

Reception, Year 2,3,4,5 and 6

Tues Nov 21st 3.30pm-6.30pm OR

Wed Nov 29th 3.30pm -6.30pm



Year 1

Wed Nov 29th 3.30-5.00 OR

Tues Dec 5th 4.30-6.30

Church Art in School

Each year we team up with the local church to make Christmas decorations to display in the church over the festive period. The children from all the different year groups work together in the school hall to make it a truly whole school team effort. This year the theme is 'Carols' and the children will be making toilet roll carol singers (see below).

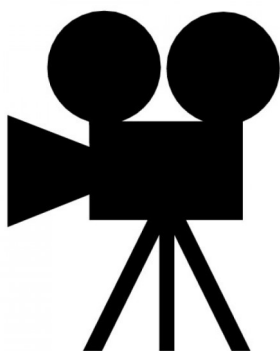


Please can the children be asked to **bring in a toilet roll before Tuesday 21st November**. Also, we would like any donations of **Christmas wrapping paper**.



New After School Club Playworker

We would like to welcome Ms Ellen Jack to the team as our new ASC playworker. Ellen is studying at the UEA during the week and will be joining us on Thursday and Friday evenings to support with looking after the children.



Film Club

We would like to bring Film Club back for a run, now that the clocks have gone back.

There will be three films in the initial run– open to all children. Booking will be by a Google Form link sent out in the week before the showing.

All film clubs will run from 3.15pm-5pm on the Fridays below.

Children should be collected from the school playground via the side gate at the end. They will be given a cup of pop corn and a drink whilst watching the film and the cost is £1.50

Friday December 1st: Sing 2 (2021) (U)

Friday December 15th: The Grinch (2018) (U)

Friday January 12th: Bad Guys (2022) (U)



Christmas Dates

Christmas Play

Tuesday December 12th 9.30am & 1.30pm

Wednesday December 13th 6pm

(Parents will be notified when tickets on sale).

Carols at Little Melton Church

Thursday December 14th 1.30pm (Garnet & Emerald Houses)

Friday December 15th 1.30pm (Topaz & Citrine Houses)

Christmas Lunch at Village Inn (funded by Friends of LMPS)

Monday December 18th 12pm– 1.30pm

Norse Christmas Lunch at School

Wednesday December 20th 12pm-1pm



Odd Socks Day in School– Monday 13th November

Anti-Bullying Week is starting on **Monday 13th November** and runs through to **Friday 17th November**.

We start the week off with **“Odd Socks Day”**.



All you need to do is wear odd socks to school on Monday 13th November!



It's a great way to celebrate what makes us all unique in Anti-Bullying Week!
Odd Socks Day is being held on **Monday 13th November** this year.
Odd Socks Day is delivered in partnership with CBeebies and CBBC star
Andy Day and his band, Andy and the Odd Socks.



Harvest Assembly,
Oct 2023

Norfolk Music Festival 2024

This is for children who play a musical instrument and is a super opportunity for children, greatly enjoyed by some of our pupils last year.

Registration for 2024 now open– <https://norfolkmusic.org.uk/booking/>

Norfolk Music Festival

HOME LOGIN ABOUT VENUES SUPPORT US **ENTER FESTIVAL** ARTS AWARD VOLUNTEERING ALUMNI

Registration for the 2024 festival is now OPEN!
FESTIVAL 2024 runs from Monday 11 to Friday 22 March 2024
Get your entries in now. Registration will close on Friday January 5th 2024.

Booking Categories

- Adult Learner
- Bands
- Brass
- Brass bands
- Cello
- Choirs
- Composition
- Double Bass
- Duets trios & quartets
- Ensembles
- Family Music
- Guitar
- Harp

ADULT BANDS INCLUDING BRASS SOLO

Children in Need Day, November 17th

We will once again be marking Children in Need day on Friday next week.

The children can choose to come to school wearing a spotty themed clothes.

Details of how to make a donation direct to the charity using the link below.

<https://www.bbcchildreninneed.co.uk/>



Music Workshop,
November 2023

Knowledge Organiser Quizzes– Autumn Term 2nd Half 2023

Snowy Owls

Family Trees and Toys from the Past

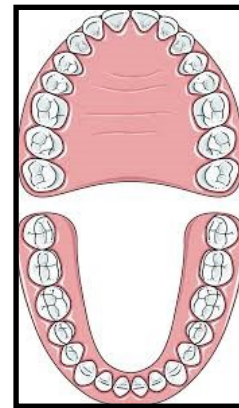
<https://forms.gle/8oaERb21GmYGbp2R9>



Barn Owls

Digestion and Teeth

<https://forms.gle/iV8KoXpcqbE5HGrLA>



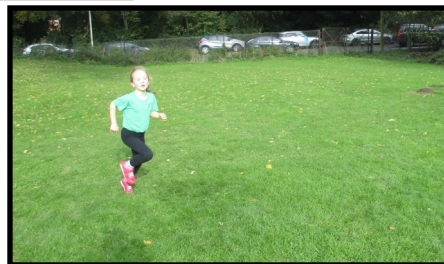
Eagle Owls

Leisure and Entertainment

<https://forms.gle/KS5aH1F3M5cueKgy9>



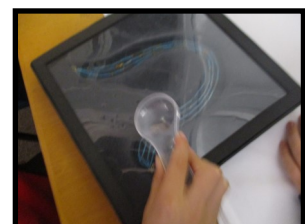
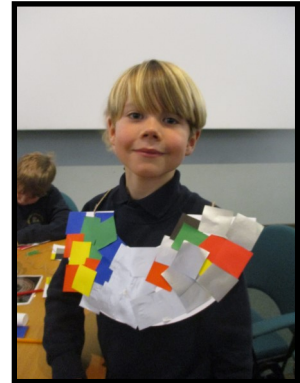
Prizes for successful entrants in last assembly before Christmas!

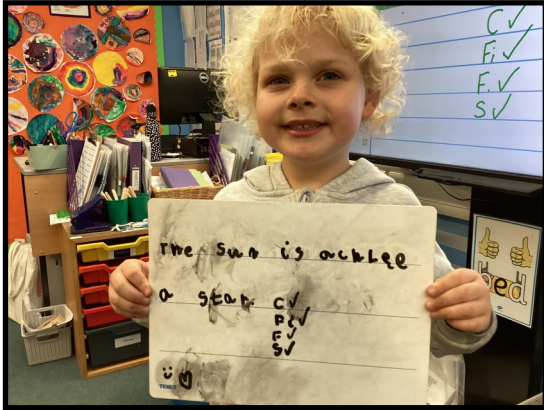
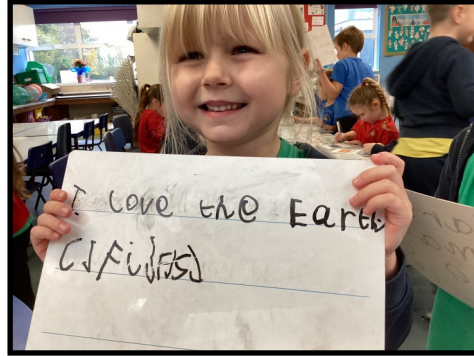


Cross-Country
at UEA,
November
2023



Barn Owls– Castle Museum Visit, November 2023





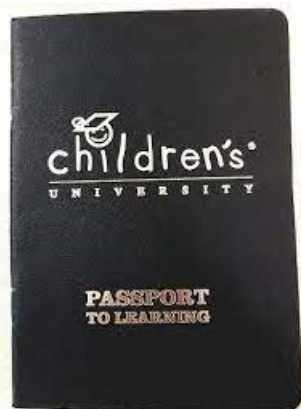
Owlets and
Snowy Owls

Some useful codes:

Pensthorpe	red	1648
Gressenhall	green	9146
Castle Museum	yellow	1113
Strumpshaw Fen	red	7914
Blickling	yellow	2594
Trowse Netball Club	red	1289
Swimming	red	2383
Hethersett Rainbows	blue	3822
Hethersett Brownies	purple	zero298
Hethersett Athletic FC	blue	8020
Perfect Performers Dance	yellow	2961
Norwich Swans	green	4508
Norwich Brownies	purple	4276
Anna Stone Piano lessons	blue	8673
Central School of Dance	green	9584
LM Karate lessons	purple	8169
Wymondham rugby club	red	7304
Heigham Park FC	red	5207
Triple Threat Drama	purple	7564
Easton Tennis Club	green	7,946
Wham Drama Club	red	9237
Woodside Cubs Group	orange	5659
Hethersett 3rd Guides	purple	5181
Crusaders Rugby	red	7263
Easton Gymnastics	purple	7862
Wymondham Beavers	orange	1073
All Stars/Dynamos Cricket	yellow	6957
LMPS Tennis Club	red	3640
Hethersett Cubs	yellow	6218
Limelight Drama	yellow	2584
Star Dance	green	7236
LMPS Uke	blue	3072



Norfolk Ski Centre	red	4435
Norfolk Hoopstars	yellow	2799
Norfolk swim school	blue	1554
East Anglia Tennis & squash club	blue	1085
Gain Fitness Club	yellow	8531
Eska Karate	purple	2944
Norwich Penguins	orange	6120
LMPS Singing	purple	5431
LMPS Chess	yellow	9886
LMPS Boardgames	green	7340
LMPS Mindfulness	green	7814
LMPS TTRS	red	1732
FITC football	purple	6720
Hethersett Beavers	red	6963
Norwich Ballet	purple	4331
UEA Gymnastics	green	7663
David Lloyd Swimming/Let's Play	orange	1923



Please continue to email me for any regular clubs that need a code.

Some useful codes:

Support with emotional wellbeing.

Mrs Plant, our mental health lead, has curated a selection of free and paid for online resources and contacts for children and adults.

These can be found on our school website at:

<http://www.littlemiltonprimaryschool.co.uk/school-information/support-with-emotional-wellbeing/>

Knowledge Organiser Quizzes– Autumn Term 1st Half

Snowy Owls

All About Me

<https://forms.gle/UQpBU2PmfqEibUJNA>



Barn Owls

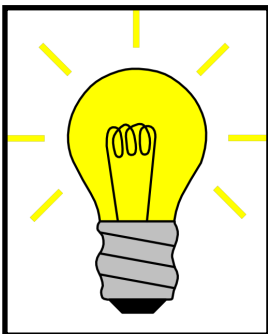
Ancient Egypt



<https://forms.gle/6rkuGyi5ZFkvS8so9>

Eagle Owls

Light



<https://forms.gle/7FWkGfRMoMu8y3RP7>

Recently:			
<p>Owlets</p> 	 <p>Toast testing</p>	<p>Barn</p> 	 <p>Cross-section of a tooth</p>
<p>Snowy</p> 	 <p>Firework writing</p>	<p>Eagle</p> 	 <p>Percussion tracks</p>
Coming up!			
<p>Owlets</p> 	<p>Z zz qu ch</p> <p>Leaf man book</p> <p>One more one less</p> <p>Diwali</p>	<p>Barn</p> 	<p>Maths - written methods for addition</p> <p>English - using powerful verbs to 'show not tell' the reader</p> <p>Topic - pharaoh</p> <p>RHE - Being kind (Anti-bullying week)</p>
<p>Snowy</p> 	<p>Addition Word Problems</p> <p>Gruffalo Theatre Visit</p> <p>Story Sequencing</p> <p>Science Day!</p>	<p>Eagle</p> 	<p>Scratch Coding</p> <p>Making Circuits</p> <p>Hidden Figures– writing about 1960's segregation</p> <p>Light Up Christmas Cards</p>



Recent or Upcoming Birthdays:

Harry C. 5, Freddie 5, Josh 6, Arthur 7, Jadon 7, Oscar 7, Charlie 8, Oliver W 8, Sophie 11, Tom 11, Grace B 11, Seth 11



Last week's attendance was: 97.06%

Attendance year to date is: 95.98%



Owlets: Erin, Bobbie, Samuel

Snowy: Paisley, Sienna

Barn: Tabitha, Jayden, Arthur

Eagle: Rudi

Housepoint Prizes:

Sophia 1300, Benji 1200, Seth 700

House Points Latest Score:				
	1149	1187	1237	1163

Yours faithfully,

Alex Pritchard, Headteacher.



Monday 13th November– Odd Socks Day

Wednesday 15th November– Snowy Visit to Playhouse Theatre

Friday 17th November– Children in Need Non-Uniform Day

Tuesday December 12th 9.30am & 1.30pm **Wednesday December 13th** 6pm – Christmas Play

Thursday December 14th 1.30pm (Garnet & Emerald Houses)

Friday December 15th 1.30pm (Topaz & Citrine Houses)- Carols at LM Church

Monday December 18th 12pm– 1.30pm—Lunch at Village Inn

Uniform

Any parents wanting to buy uniform can purchase it direct from this website:

<https://www.superstitch86.co.uk/product-category/schoolwear/primary-schools-academies/little-melton-primary-school/>



Nut Free School



A general reminder that we operate a nut-free policy in school for all food. Please be particularly careful with any food provided to celebrate birthdays as some chocolate can include traces of nuts. We do have some children with severe allergies in our school and we obviously want to look after them to the very best of our ability.



Little Melton Preschool, Little Melton Village Hall,
Mill Road, Little Melton, Norwich, NR9 3NX.
Telephone: 01603 812362 (session time only)
Email: info@littlemeltonpreschoolnursery.co.uk



LITTLE MELTON PRESCHOOL



**HAPPY, SAFE, NURTURING & AFFORDABLE
CHILDCARE FOR CHILDREN AGED 2 - 5 YEARS**

Monday 9.15am - 12.15pm

Tuesday 8.30am - 1pm

Wednesday 8.30am - 1pm

Thursday 8.30am - 1pm

Friday 9.15am - 12.15pm

**LITTLE MELTON PRESCHOOL PRIDES ITSELF ON OFFERING A FUN, EDUCATIONAL ENVIRONMENT WHERE
CHILDREN THRIVE AND PLAY, WITH THE DEDICATED SUPPORT & CARE OF A PROFESSIONAL TEAM.**

**IF YOU WOULD LIKE TO FIND OUT MORE OR ARRANGE A VISIT,
PLEASE GET IN TOUCH BY EMAIL OR PHONE. WE WOULD LOVE TO HEAR FROM YOU.**



“Boys and girls
welcome!”

Be a Chorister for the Day

Saturday 18 November 2023

10:30 - 16:00

Register for a place at this open event.

norwich-school.org.uk/admissions/register-your-interest

For more information contact:

T : 01603 728449

E : choir@cathedral.org.uk or
admissions@norwich-school.org.uk

NORWICH



NORWICH
Dhil
NORWICH PHILHARMONIC
ORCHESTRA AND CHORUS
SEASON 2023/24

SATURDAY
10 FEBRUARY
2024
2.30 & 4.30pm
THE KING'S
CENTRE
NORWICH

The Phil's Children's Concert

*A fun and informal concert for
young children and their families*

Norwich Philharmonic Orchestra
Matthew Andrews conductor
Bernard Hughes narrator

Composer Bernard Hughes narrates James Mayhew's
funny children's book *The Knight Who Took All Day*
and introduces heroic music by Tchaikovsky, Rossini, Grieg
and others, plus the theme to *How To Train Your Dragon*.
With 2 performances of about an hour each, children can sit on the floor or on bean bags
close to the musicians and have a go on some of the instruments during the interval!
Suggested age range 5-11 but older children will enjoy it too

© James Mayhew

TICKETS **£12 (£5 children/students/under 26)**
ONLINE www.ticketsource.co.uk/norwichphil
PHONE **0333 666 3366** (Mon-Fri 9am-5pm)
INFO www.norwichphil.org.uk



www.facebook.com/NorwichPhil



[@norwich_phil](https://twitter.com/norwich_phil)



RSC CHARITY NO. 264425



the
national
sleep
helpline

Does your child suffer with sleep issues?

Do you struggle with your child's bedtime?

Will your child not sleep in their own bed?

WE CAN HELP

03303 530 541

Monday, Tuesday & Thursday 7pm - 9pm
Monday & Wednesday 9am - 11am

the
national
sleep
helpline

50%

Around 50% of children will have a sleep issue at some point*

WHAT IS THE NATIONAL SLEEP HELPLINE?

In partnership with Furniture Village, The Sleep Charity has launched a brand new National Sleep Helpline to ensure that everyone has access to high quality, evidence-based advice.

HOW CAN THE NATIONAL SLEEP HELPLINE HELP YOU?

- Run by a team of specialist trained sleep advisors
- Offer you some practical strategies and recommend services that could help
- Ensuring you understand how sleep plays an important part in your child's mental health and wellbeing
- Listen without judgement and help you decide what next steps are right for you
- Empower you with sleep knowledge so you can understand why your child might not be sleeping well and how that can change

03303 530 541

Monday, Tuesday & Thursday 7pm - 9pm
Monday & Wednesday 9am - 11am

POWERED BY

the
sleep
charity

IN PARTNERSHIP WITH

Furniture
Village

Copyright © 2023 The Sleep Charity. All rights reserved. The Sleep Charity, a charitable incorporated organisation registered with the Charity Commission under registration number 1160365.
*Survey of 2,000 adults by OnePoll, Aug 2021