

# Little Melton Primary School



School Lane, Little Melton, Norwich, Norfolk NR9 3AD  
Tel: 01603 811446 • Email: [office@littlemelton.norfolk.sch.uk](mailto:office@littlemelton.norfolk.sch.uk)  
Head Teacher: Alex Pritchard



## Newsletter 23rd November 2023

Dear Parents,

It was great to see lots of you at Parents Evening on Tuesday, with part two to follow next week or the week after for Year 1. There is also the option of requesting a Zoom online meeting if helpful– please contact the school office if you would like to arrange this.

Snowy Owls had a really enjoyable visit to the Playhouse Theatre last week to see *Gruffalo's Child*. The staff were very impressed with their excellent behaviour throughout, and the show was really good too.

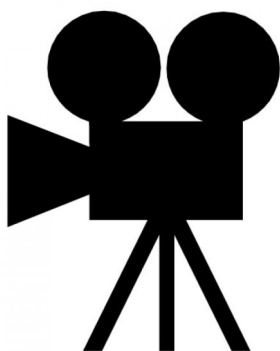
Many of the children took part in both Odd Socks Day (to raise awareness of anti-bullying by celebrating differences) and also Children in Need Day last week. There is a further non-uniform day on Friday with children encouraged to bring in a contribution for the Friends hamper (see Friends Christmas information later in newsletter).

Year 2 children enjoyed a visit to Easton Sports Hall on Tuesday for an inter school multi-skills event, as part of our membership of Norwich Sports Partnership. Similarly we had six children compete in the Cross-Country finals at High Lodge Thetford yesterday, following their excellent performance in the UEA event last month. The children competing in the finals were: Oliver (3), Hannah (3), Jack (4), Ollie (4), Ketty (5) and Zack (5). Many thanks to parents for supporting this visit so that they could participate.

On Tuesday all of the children had a whole school art and craft afternoon in the school hall, working across the age groups to make the toilet roll carol singers for Little Melton church. There were many superb results of this– all to be on display in the church over the festive period. For parents new to the school, the carol services are done on a house team basis so that all of the children attend with any siblings and there is a good age range to help with the singing. Parents and extended family are warmly invited to attend the church and join in the service.



Odd Socks Day,  
November 2023



### Film Club

We would like to bring Film Club back for a run, now that the clocks have gone back.

There will be three films in the initial run– open to all children. Booking will be by a Google Form link sent out in the week before the showing.

All film clubs will run from 3.15pm-5pm on the Fridays below.

Children should be collected from the school playground via the side gate at the end. They will be given a cup of pop corn and a drink whilst watching the film and the cost is £1.50

Friday December 1st: Sing 2 (2021) (U)

Friday December 15th: The Grinch (2018) (U)

Friday January 12th: Bad Guys (2022) (U)



### Christmas Dates

#### Christmas Play

Tuesday December 12th 9.30am & 1.30pm

Wednesday December 13th 6pm

(Parents will be notified when tickets on sale).

#### Carols at Little Melton Church

Thursday December 14th 1.30pm (Garnet & Emerald Houses)

Friday December 15th 1.30pm (Topaz & Citrine Houses)

#### Christmas Lunch at Village Inn (funded by Friends of LMPS)

Monday December 18th 12pm– 1.30pm

#### Norse Christmas Lunch at School

Wednesday December 20th 12pm-1pm



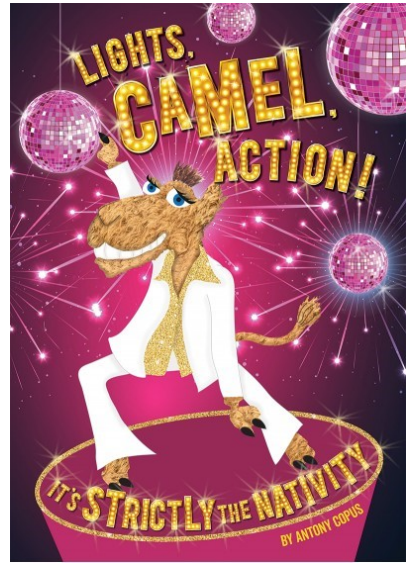
### Christmas Play Tickets- 'Lights, Camel, Action!'

Tickets will be available to book through a Google Form link from Thursday November 30th.

Each family will initially be allocated 2 tickets for a performance, but there will be the opportunity to make an application for extra tickets if we have spaces after we have satisfied all first preferences.

A reminder that the dates/times of the performances are:

**Tuesday December 12th 9.30am & 1.30pm**  
**Wednesday December 13th 6pm**



Children in Need Day,  
November 2023



Cross-Country Finals at  
High Lodge, November  
2023



## Snowy Science Day

Children in Snowy Owl's enjoyed a whole day of Space-themed Science lessons this week. As well as building rockets on the school playground, this also included an exciting visit inside a Planetarium to look at a recreation of stars and planets in the night sky.







Barn Owls Sugar and Teeth Investigation- with excellent write up by Emelia

Wednesday 1st November  
I am investigating the effects of 6 drinks on teeth.

**Question**  
How do different drinks affect teeth?

**Equipment**  
6 white eggs  
6 different drinks - 200ml of each  
6 clear plastic cups  
drying paper

**Procedure**  
I added the egg in the water and milk will stay the same because water and milk are healthy for your teeth. I think that the egg in the orange juice, cola and the fruit shoot will go yellowy because these drinks are not very good for your teeth. I think that the egg in the tea on the sides as it will go a bit happy because tea has some little bits in.

**Observations**  
At the start, the eggs were white. After 24 hours, the eggs were yellowy and the milk and water were normal looking eggs.

**After 2 days**

orange juice, fruit shoot, water, tea, Pepsi, milk

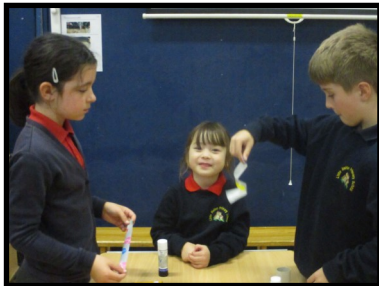
The water and milk stayed the same. The tea and cola on the bottom and the fruit shoot went yellowy and grey.

**Conclusion**

It is a drink has a high amount of sugar in it. The drinks that are bad for your teeth are those that have a high amount of sugar in them. The drinks that are good for your teeth are those that have a low amount of sugar in them. I think that the egg in the orange juice, cola and the fruit shoot will go yellowy because these drinks are not very good for your teeth. I think that the egg in the tea on the sides as it will go a bit happy because tea has some little bits in.

Super work again Emelia.





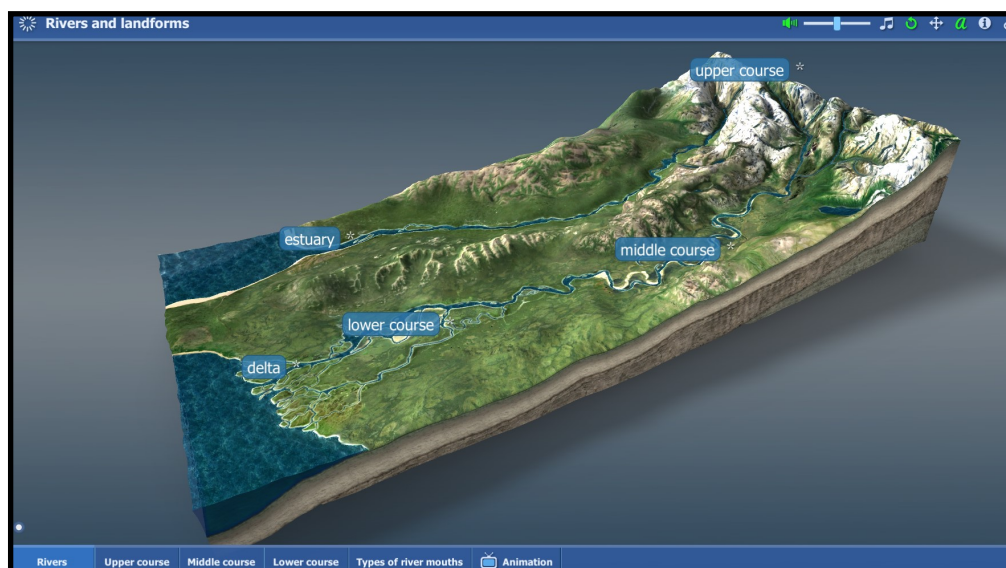
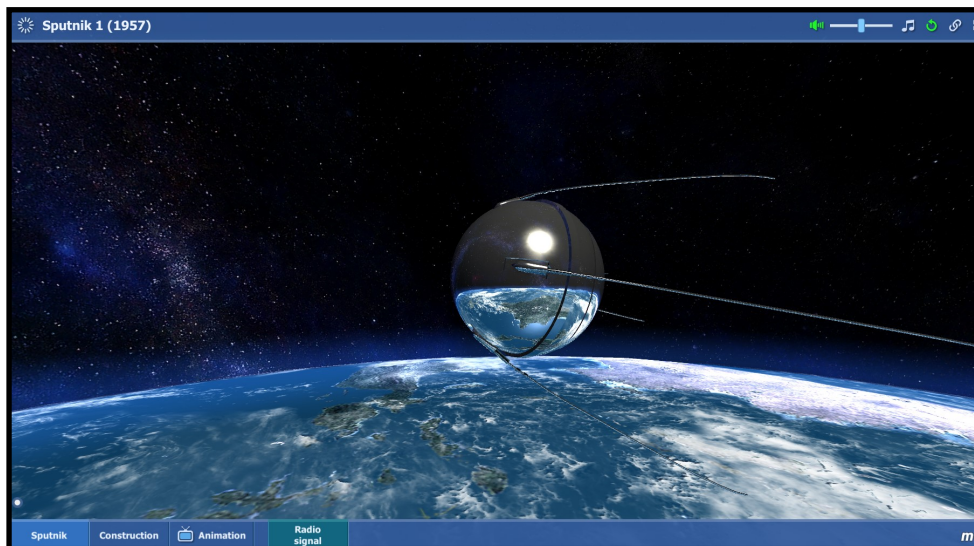
Christmas Carol  
Singers for Little Melton  
Church,  
November 2023







3D interactive learning resources for Science, History and Geography—  
with free home access!





## Christmas 2023 with the Friends of Little Melton Primary School

The run up to Christmas is always busy and we have a lot of exciting events planned for the festive period...below is a summary to stick on the fridge door!

- **Now until 24th November** - Bring in your (clean) pre-loved Christmas jumpers to school to donate to the Friends.
- **24th November**- Non-uniform day - please bring in something for the Christmas hampers. (Raffle tickets to win one of the hampers will be available to purchase at the Christmas play performances).
- **24th November 7.30pm** - Quiz & Pizza event at Crusaders Rugby Club
- **1st December** - Come along to the school hall/playground (weather depending) after school to buy a Christmas jumper for just £2.
- **Early December** - decorate Christmas decorations for the school tree...more information to follow!
- **8th December** - Christmas Jumper day in aid of Save the Children - wear your new (to you) jumper with pride!
- **18th December** - Christmas lunch for the children at 'The Village Inn' provided by the Friends of Little Melton.
- **12/13th December** - Buy your raffle tickets at the school play performances
- **15th December** - hamper winners announced and collect their prizes.





## Knowledge Organiser Quizzes– Autumn Term 2nd Half 2023

Snowy Owls

Family Trees and Toys from the Past

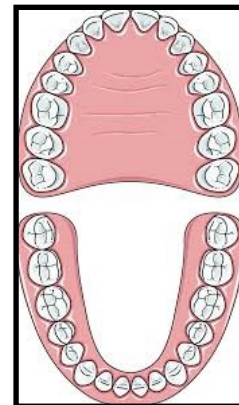
<https://forms.gle/8oaERb21GmYGbp2R9>



Barn Owls

Digestion and Teeth

<https://forms.gle/iV8KoXpcqbE5HGrLA>



Eagle Owls

Leisure and Entertainment

<https://forms.gle/KS5aH1F3M5cueKgy9>



Prizes for successful entrants in last assembly before Christmas!

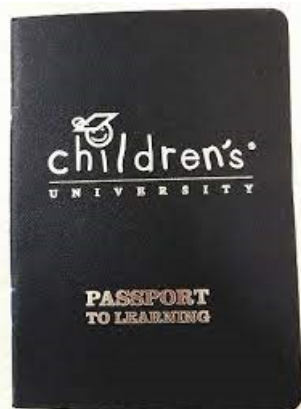
Some useful codes:

Pensthorpe	red	1648
Gressenhall	green	9146
Castle Museum	yellow	1113
Strumpshaw Fen	red	7914
Blickling	yellow	2594
Trowse Netball Club	red	1289
Swimming	red	2383
Hethersett Rainbows	blue	3822
Hethersett Brownies	purple	zero298
Hethersett Athletic FC	blue	8020
Perfect Performers Dance	yellow	2961
Norwich Swans	green	4508
Norwich Brownies	purple	4276
Anna Stone Piano lessons	blue	8673
Central School of Dance	green	9584
LM Karate lessons	purple	8169
Wymondham rugby club	red	7304
Heigham Park FC	red	5207
Triple Threat Drama	purple	7564
Easton Tennis Club	green	7,946
Wham Drama Club	red	9237
Woodside Cubs Group	orange	5659
Hethersett 3rd Guides	purple	5181
Crusaders Rugby	red	7263
Easton Gymnastics	purple	7862
Wymondham Beavers	orange	1073
All Stars/Dynamos Cricket	yellow	6957
LMPS Tennis Club	red	3640
Hethersett Cubs	yellow	6218
Limelight Drama	yellow	2584
Star Dance	green	7236
LMPS Uke	blue	3072





Norfolk Ski Centre	red	4435
Norfolk Hoopstars	yellow	2799
Norfolk swim school	blue	1554
East Anglia Tennis & squash club	blue	1085
Gain Fitness Club	yellow	8531
Eska Karate	purple	2944
Norwich Penguins	orange	6120
LMPS Singing	purple	5431
LMPS Chess	yellow	9886
LMPS Boardgames	green	7340
LMPS Mindfulness	green	7814
LMPS TTRS	red	1732
FITC football	purple	6720
Hethersett Beavers	red	6963
Norwich Ballet	purple	4331
UEA Gymnastics	green	7663
David Lloyd Swimming/Let's Play	orange	1923



Please continue to email me for any regular clubs that need a code.

Some useful codes:

#### Support with emotional wellbeing.

Mrs Plant, our mental health lead, has curated a selection of free and paid for online resources and contacts for children and adults.

These can be found on our school website at:

<http://www.littlemiltonprimaryschool.co.uk/school-information/support-with-emotional-wellbeing/>

Recently:			
<p>Owlets</p> 	 <p>2 D Shape Pictures</p>	<p>Barn</p>   <p>Writing up an Experiment</p>	
<p>Snowy</p> 	 <p>Multi-Skills</p>	<p>Eagle</p>   <p>Circuits</p>	
Coming up!			
<p>Owlets</p> 	<p>Gruffalo art and themed activities</p> <p>Estimation</p> <p>Phonics revision of all sounds taught this term</p>	<p>Barn</p> 	<p>Subtraction</p> <p>Inference in writing</p> <p>Painting Pharaoh crowns</p> <p>Christmas Play Rehearsals</p>
<p>Snowy</p> 	<p>Writing a different ending to a story</p> <p>Subtraction</p> <p>Opaque, translucent and transparent</p>	<p>Eagle</p> 	<p>Long multiplication</p> <p>Dickens– Christmas Carol</p> <p>Clement Moore– Night Before Christmas</p> <p>Light Up Christmas Cards</p>





Recent or Upcoming Birthdays:

Sienna 6  
Josh 6  
Arthur 7  
Oscar 7  
Oliver 8



Last week's attendance was: 94.2%

Attendance year to date is: 96.0%



Owlets: Hallie, Wilf and Alice

Snowy: Scarlett, Louellen and Jacob

Barn: Sienna, Bessie

Eagle: Oliver

House Points This Term				
	1403	1442	1494	1408

Yours faithfully,

Alex Pritchard, Headteacher.



**Friday November 24th** Non-Uniform Day  
– bring a hamper donation for Friends

**Friday December 8th** Christmas Jumper Day

**Tuesday December 12th** 9.30am & 1.30pm **Wednesday December 13th** 6pm  
– Christmas Play

**Thursday December 14th** 1.30pm  
(Garnet & Emerald Houses)

**Friday December 15th** 1.30pm (Topaz & Citrine Houses)- Carols at LM Church

**Monday December 18th** 12pm– 1.30pm—Lunch at Village Inn

**Wednesday 20th December**– End of Term

Uniform

Any parents wanting to buy uniform can purchase it direct from this website:

<https://www.superstitch86.co.uk/product-category/schoolwear/primary-schools-academies/little-melton-primary-school/>



Nut Free School



A general reminder that we operate a nut-free policy in school for all food. Please be particularly careful with any food provided to celebrate birthdays as some chocolate can include traces of nuts. We do have some children with severe allergies in our school and we obviously want to look after them to the very best of our ability.



**Little Melton Preschool**, Little Melton Village Hall,  
Mill Road, Little Melton, Norwich, NR9 3NX.  
Telephone: 01603 812362 (session time only)  
Email: [info@littlemeltonpreschoolnursery.co.uk](mailto:info@littlemeltonpreschoolnursery.co.uk)



# LITTLE MELTON PRESCHOOL



**HAPPY, SAFE, NURTURING & AFFORDABLE  
CHILDCARE FOR CHILDREN AGED 2 - 5 YEARS**

Monday 9.15am - 12.15pm

Tuesday 8.30am - 1pm

Wednesday 8.30am - 1pm

Thursday 8.30am - 1pm

Friday 9.15am - 12.15pm

**LITTLE MELTON PRESCHOOL PRIDES ITSELF ON OFFERING A FUN, EDUCATIONAL ENVIRONMENT WHERE  
CHILDREN THRIVE AND PLAY, WITH THE DEDICATED SUPPORT & CARE OF A PROFESSIONAL TEAM.**

**IF YOU WOULD LIKE TO FIND OUT MORE OR ARRANGE A VISIT,  
PLEASE GET IN TOUCH BY EMAIL OR PHONE. WE WOULD LOVE TO HEAR FROM YOU.**



**NORWICH**  
**Dhil**  
NORWICH PHILHARMONIC  
ORCHESTRA AND CHORUS  
SEASON 2023/24

**SATURDAY**  
**10 FEBRUARY**  
**2024**  
**2.30 & 4.30pm**  
**THE KING'S**  
**CENTRE**  
**NORWICH**

# The Phil's Children's Concert

*A fun and informal concert for  
young children and their families*

Norwich Philharmonic Orchestra  
Matthew Andrews conductor  
Bernard Hughes narrator

Composer Bernard Hughes narrates James Mayhew's  
funny children's book *The Knight Who Took All Day*  
and introduces heroic music by Tchaikovsky, Rossini, Grieg  
and others, plus the theme to *How To Train Your Dragon*.  
With 2 performances of about an hour each, children can sit on the floor or on bean bags  
close to the musicians and have a go on some of the instruments during the interval!  
*Suggested age range 5-11 but older children will enjoy it too*

© James Mayhew

TICKETS **£12 (£5 children/students/under 26)**  
ONLINE [www.ticketsource.co.uk/norwichphil](http://www.ticketsource.co.uk/norwichphil)  
PHONE **0333 666 3366** (Mon-Fri 9am-5pm)  
INFO [www.norwichphil.org.uk](http://www.norwichphil.org.uk)



[www.facebook.com/NorwichPhil](https://www.facebook.com/NorwichPhil)



[@norwich\\_phil](https://twitter.com/norwich_phil)



RSC CHARITY NO. 264425



the national sleep helpline

# Does your child suffer with sleep issues?

Do you struggle with your child's bedtime?

Will your child not sleep in their own bed?

WE CAN HELP

**03303 530 541**

Monday, Tuesday & Thursday 7pm - 9pm  
Monday & Wednesday 9am - 11am

the national sleep helpline

**50%**

**Around 50% of children will have a sleep issue at some point\***

**WHAT IS THE NATIONAL SLEEP HELPLINE?**

In partnership with Furniture Village, The Sleep Charity has launched a brand new National Sleep Helpline to ensure that everyone has access to high quality, evidence-based advice.

**HOW CAN THE NATIONAL SLEEP HELPLINE HELP YOU?**

- Run by a team of specialist trained sleep advisors
- Offer you some practical strategies and recommend services that could help
- Ensuring you understand how sleep plays an important part in your child's mental health and wellbeing
- Listen without judgement and help you decide what next steps are right for you
- Empower you with sleep knowledge so you can understand why your child might not be sleeping well and how that can change

**03303 530 541**

Monday, Tuesday & Thursday 7pm - 9pm  
Monday & Wednesday 9am - 11am

POWERED BY the sleep charity

IN PARTNERSHIP WITH Furniture Village

Copyright © 2023 The Sleep Charity. All rights reserved. The Sleep Charity, a charitable incorporated organisation registered with the Charity Commission under registration number 1160365.  
\*Survey of 2,000 adults by OnePoll, Aug 2021