

Little Melton Primary School



School Lane, Little Melton, Norwich, Norfolk NR9 3AD
Tel: 01603 811446 • Email: office@littlemelton.norfolk.sch.uk
Head Teacher: Alex Pritchard



Newsletter 8th December 2023

Dear Parents,

Rehearsals for the Christmas play are in full swing, and I know that the children are excited about performing it to you all next week. The evening and afternoon productions are now full, but there are some tickets available for the Wednesday 9.30am showing via the Google Form sent out earlier this week. For the evening show, children should arrive at school in costume to be let in to school at 5.45pm for the 6pm start. Please don't bring children much earlier than this as staff will be getting set up for the performance and we don't want to leave people outside for a prolonged period. The show will then last approximately one hour and children can be collected from classrooms afterwards, once staff have been made aware.

Also next week on Thursday and Friday afternoons, we will be taking the children up to Little Melton church to sing some popular carols and Christmas songs. All parents and extended families are welcome to attend (please check day for each house colour). The service will last about 45 minutes and the children will all be walked back to school afterwards. Any parents wishing to collect their children early can do so—once we have taken them back to school first. If you are interested in supporting us in escorting the children on the walk up to the church and back, please contact the school office as soon as possible.

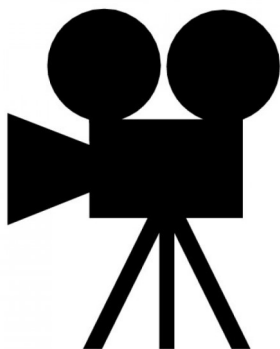
Barn Owls marked 'No Pens Day' last week with a whole day of speaking and listening activities. Mrs Cameron was very impressed with the preparations many of the children had made for their presentations to the rest of the class—pictures elsewhere in the newsletter.

Last Monday was also the final week of the inter-schools football competition for Years 5 and 6 at the UEA. Many thanks to all of the parents who attended to support the teams, and they were rewarded with both teams finishing the league with some good wins!

Finally, this is the last newsletter before the end of term. The children return to school on Thursday January 4th.

Have an excellent Christmas!





Film Club

We would like to bring Film Club back for a run, now that the clocks have gone back.

There will be three films in the initial run– open to all children. Booking will be by a Google Form link sent out in the week before the showing.

All film clubs will run from 3.15pm-5pm on the Fridays below.

Children should be collected from the school playground via the side gate at the end. They will be given a cup of pop corn and a drink whilst watching the film and the cost is £1.50

Friday December 15th: The Grinch (2018) (U)

Friday January 12th: Bad Guys (2022) (U)



Christmas Dates

Christmas Play

Tuesday December 12th 1.30pm

Wednesday December 13th 9.30am and 6pm

Carols at Little Melton Church

Thursday December 14th 1.30pm (Garnet & Emerald Houses)

Friday December 15th 1.30pm (Topaz & Citrine Houses)

Christmas Lunch at Village Inn (funded by Friends of LMPS)

Monday December 18th 12pm– 1.30pm

Norse Christmas Lunch at School

Wednesday December 20th 12pm-1pm



Staffing News:

Mrs Lee will be starting maternity leave for her second child at the end of the Spring term. We all wish her the very best at this exciting time and will inform parents of the revised staffing arrangements for Snowy Owls in due course.



Snowy- Testing Materials

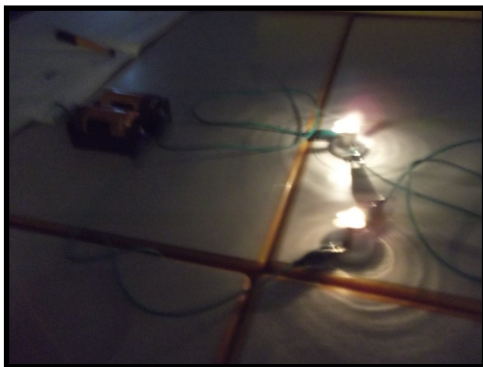
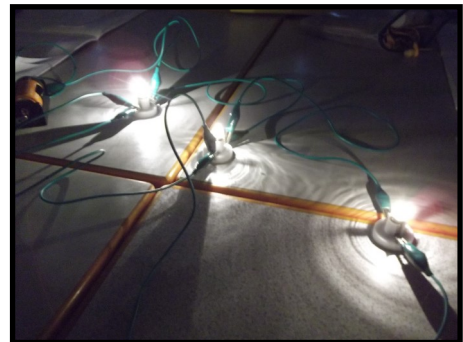
Owlets- Diwali



Don't forget to visit our school Facebook page for more photos of the school in action each week..



Eagle Owls,
Light Up
Christmas
Cards,
November 2023





No Pens Day– Barn Owls, November 2023

Knowledge Organiser Quizzes– Autumn Term 2nd Half 2023

Snowy Owls

Family Trees and Toys from the Past

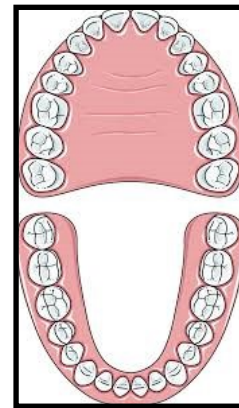
<https://forms.gle/8oaERb21GmYGbp2R9>



Barn Owls

Digestion and Teeth

<https://forms.gle/iV8KoXpcqbE5HGrLA>



Eagle Owls

Leisure and Entertainment

<https://forms.gle/KS5aH1F3M5cueKgy9>



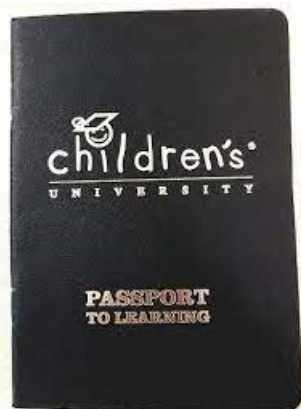
Prizes for successful entrants in last assembly before Christmas!

Some useful codes:

Pensthorpe	red	1648
Gressenhall	green	9146
Castle Museum	yellow	1113
Strumpshaw Fen	red	7914
Blickling	yellow	2594
Trowse Netball Club	red	1289
Swimming	red	2383
Hethersett Rainbows	blue	3822
Hethersett Brownies	purple	zero298
Hethersett Athletic FC	blue	8020
Perfect Performers Dance	yellow	2961
Norwich Swans	green	4508
Norwich Brownies	purple	4276
Anna Stone Piano lessons	blue	8673
Central School of Dance	green	9584
LM Karate lessons	purple	8169
Wymondham rugby club	red	7304
Heigham Park FC	red	5207
Triple Threat Drama	purple	7564
Easton Tennis Club	green	7,946
Wham Drama Club	red	9237
Woodside Cubs Group	orange	5659
Hethersett 3rd Guides	purple	5181
Crusaders Rugby	red	7263
Easton Gymnastics	purple	7862
Wymondham Beavers	orange	1073
All Stars/Dynamos Cricket	yellow	6957
LMPS Tennis Club	red	3640
Hethersett Cubs	yellow	6218
Limelight Drama	yellow	2584
Star Dance	green	7236
LMPS Uke	blue	3072



Norfolk Ski Centre	red	4435
Norfolk Hoopstars	yellow	2799
Norfolk swim school	blue	1554
East Anglia Tennis & squash club	blue	1085
Gain Fitness Club	yellow	8531
Eska Karate	purple	2944
Norwich Penguins	orange	6120
LMPS Singing	purple	5431
LMPS Chess	yellow	9886
LMPS Boardgames	green	7340
LMPS Mindfulness	green	7814
LMPS TTRS	red	1732
FITC football	purple	6720
Hethersett Beavers	red	6963
Norwich Ballet	purple	4331
UEA Gymnastics	green	7663
David Lloyd Swimming/Let's Play	orange	1923



Please continue to email me for any regular clubs that need a code.

Some useful codes:

Support with emotional wellbeing.

Mrs Plant, our mental health lead, has curated a selection of free and paid for online resources and contacts for children and adults.

These can be found on our school website at:

<http://www.littlemiltonprimaryschool.co.uk/school-information/support-with-emotional-wellbeing/>



Recent or Upcoming Birthdays:

Alice 5, Poppy 5, Elliot E 6, Sienna 6,
Beth 7, Thomas C 8, Scarlett R 9, Jayden C 9,
Benji 11, Sam 11, Sophia 11,



Last week's attendance was: 96.89%

Attendance year to date is: 95.84%



Owlets: Poppy, Alice, Wilf

Snowy: Eddie, Blue, Oscar, Jadon

Barn: Ethan, Summer, Scarlett, Oliver, Seth,
Sienna, Flora and Lottie

Eagle: Sophie, George, Benji and Ketty

Housepoints: Ted 700, Sam 900, Sophie 1300

House Points This Term				
	1529	1573	1639	1553

Yours faithfully,

Alex Pritchard, Headteacher.



Tuesday December 12th 1.30am
Wednesday December 13th 9.30am &
6pm— Christmas Play

Thursday December 14th 1.30pm
(Garnet & Emerald Houses)

Friday December 15th 1.30pm (Topaz &
Citrine Houses)- Carols at LM Church

Monday December 18th 12pm–
1.30pm—Lunch at Village Inn

Wednesday 20th December– End of
Term

Thursday 4th January– School Re-
Opens for Children

Uniform

Any parents wanting to buy uniform can
purchase it direct from this website:

<https://www.superstitch86.co.uk/product-category/schoolwear/primary-schools-academies/little-melton-primary-school/>



Nut Free School



A general reminder that we operate a nut-free policy in school for all food. Please be particularly careful with any food provided to celebrate birthdays as some chocolate can include traces of nuts. We do have some children with severe allergies in our school and we obviously want to look after them to the very best of our ability.



Little Melton Preschool, Little Melton Village Hall,
Mill Road, Little Melton, Norwich, NR9 3NX.
Telephone: 01603 812362 (session time only)
Email: info@littlemeltonpreschoolnursery.co.uk



LITTLE MELTON PRESCHOOL



**HAPPY, SAFE, NURTURING & AFFORDABLE
CHILDCARE FOR CHILDREN AGED 2 - 5 YEARS**

Monday 9.15am - 12.15pm

Tuesday 8.30am - 1pm

Wednesday 8.30am - 1pm

Thursday 8.30am - 1pm

Friday 9.15am - 12.15pm

**LITTLE MELTON PRESCHOOL PRIDES ITSELF ON OFFERING A FUN, EDUCATIONAL ENVIRONMENT WHERE
CHILDREN THRIVE AND PLAY, WITH THE DEDICATED SUPPORT & CARE OF A PROFESSIONAL TEAM.**

**IF YOU WOULD LIKE TO FIND OUT MORE OR ARRANGE A VISIT,
PLEASE GET IN TOUCH BY EMAIL OR PHONE. WE WOULD LOVE TO HEAR FROM YOU.**

NORWICH
Phil
NORWICH PHILHARMONIC
ORCHESTRA AND CHORUS
SEASON 2023/24

**SATURDAY
10 FEBRUARY
2024
2.30 & 4.30pm
THE KING'S
CENTRE
NORWICH**

The Phil's Children's Concert

*A fun and informal concert for
young children and their families*

Norwich Philharmonic Orchestra
Matthew Andrews conductor
Bernard Hughes narrator

Composer Bernard Hughes narrates James Mayhew's
funny children's book *The Knight Who Took All Day*
and introduces heroic music by Tchaikovsky, Rossini, Grieg
and others, plus the theme to *How To Train Your Dragon*.
With 2 performances of about an hour each, children can sit on the floor or on bean bags
close to the musicians and have a go on some of the instruments during the interval!
Suggested age range 5-11 but older children will enjoy it too

© James Mayhew

TICKETS **£12 (£5 children/students/under 26)**
ONLINE www.ticketsource.co.uk/norwichphil
PHONE **0333 666 3366** (Mon-Fri 9am-5pm)
INFO www.norwichphil.org.uk



www.facebook.com/NorwichPhil



[@norwich_phil](https://twitter.com/norwich_phil)



RSC CHARITY NO. 264425



the
national
sleep
helpline

Does your child suffer with sleep issues?

Do you struggle with your child's bedtime?

Will your child not sleep in their own bed?

WE CAN HELP

03303 530 541

Monday, Tuesday & Thursday 7pm - 9pm
Monday & Wednesday 9am - 11am

the
national**sleep**
helpline

50%

Around 50% of children will have a sleep issue at some point*

WHAT IS THE NATIONAL SLEEP HELPLINE?

In partnership with Furniture Village, The Sleep Charity has launched a brand new National Sleep Helpline to ensure that everyone has access to high quality, evidence-based advice.

HOW CAN THE NATIONAL SLEEP HELPLINE HELP YOU?

- Run by a team of specialist trained sleep advisors
- Offer you some practical strategies and recommend services that could help
- Ensuring you understand how sleep plays an important part in your child's mental health and wellbeing
- Listen without judgement and help you decide what next steps are right for you
- Empower you with sleep knowledge so you can understand why your child might not be sleeping well and how that can change

03303 530 541

Monday, Tuesday & Thursday 7pm - 9pm
Monday & Wednesday 9am - 11am

POWERED BY
the
sleep
charity

IN PARTNERSHIP WITH
Furniture
Village

Copyright © 2023 The Sleep Charity. All rights reserved. The Sleep Charity, a charitable incorporated organisation registered with the Charity Commission under registration number 1160365.
*Survey of 2,000 adults by OnePoll, Aug 2021