

# Barn Owls

# Plants – Knowledge Organiser

## Key Vocabulary

**Flowers** - Make seeds to grow into new plants. Their petals attract pollinators to the plant.

**Leaves** - Make food for the plant using sunlight and carbon dioxide from the air.

**Roots** - Anchor the plant into the ground and absorb water and nutrients from the soil.

**Stem** - Holds the plant up and carries water and nutrients from the soil to the leaves.

**Chlorophyll** – The green substance found inside leaves which is responsible for absorbing light.

**Evaporation** - When liquid turns into a gas.

**Fertilisation** - When the male and female parts of the flower have mixed in order to make seeds for new plants.

**Germination** - When a seed starts to grow.

**Nutrients** - Substances needed by living things to grow and survive. Plants get nutrients from the soil and also make their own food in their leaves.

**Petal** - Brightly coloured part of the flower that attracts insects to pollinate the plant.

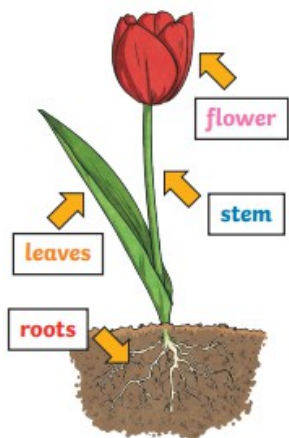
**Photosynthesis** – The process by which green plants use the sun’s energy along with water and carbon dioxide to produce their own food in the form of glucose (sugar).

**Pollination** - When pollen is moved from the male anther of a flower to the female stigma

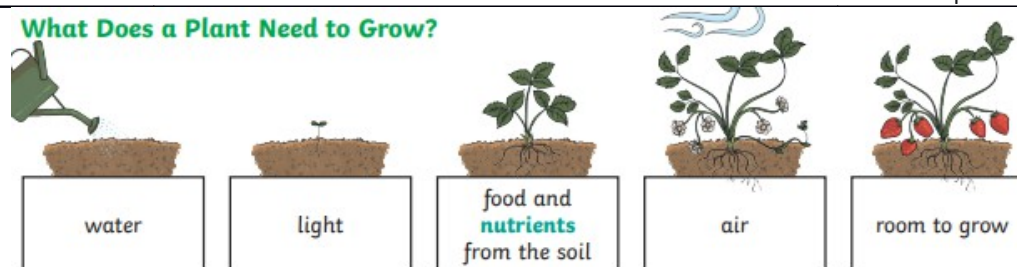
**Seed** - the unit of reproduction of a flowering plant, capable of developing into another such plant.

**Seed dispersal** – The movement or transport of seeds away from the plant.

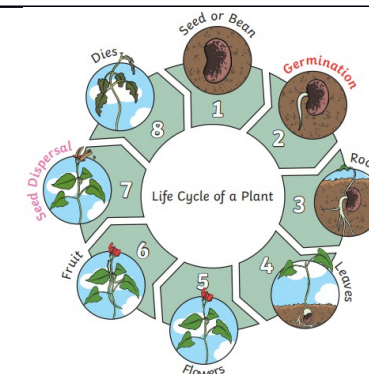
## The 4 main parts of a plant



## What Does a Plant Need to Grow?

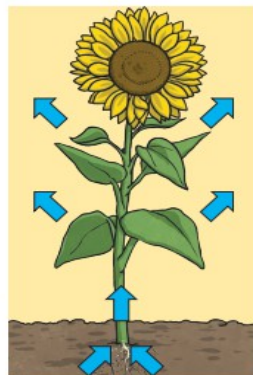


Different plants vary in how much of these things they need. For example, cacti can survive in areas with little water, whereas water lilies need to live in water.



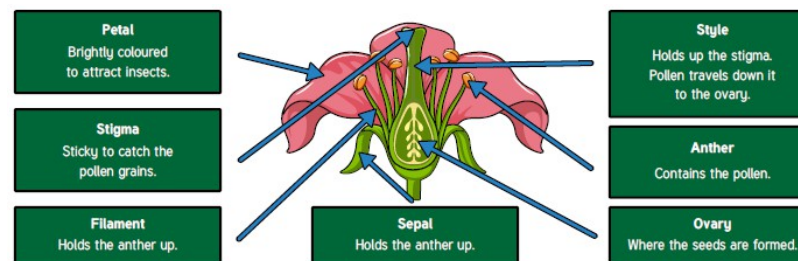
## How Water Moves through a Plant

1. The **roots** absorb water from the soil.
2. The **stem** transports water to the **leaves**.
3. Water **evaporates** from the **leaves**.
4. This **evaporation** causes more water to be sucked up the **stem**.



The water is sucked up the **stem** like water being sucked up through a straw.

## Parts of a flower



The flower’s main job is to create new seeds.

## Characteristics of Living Things – MRS NERG/MRS GREN

M	Movement	Animals move around, plants grow toward light and their roots grow into the soil.
R	Respiration	The process of using oxygen to turn food into energy.
S	Sensitivity	Living things react to their environment.
N	Nutrition	Food provides energy for plants and animals to live.
E	Excretion	Removing waste products from the body.
R	Reproduction	Animals have babies & plants grow from seeds.
G	Growth	Animals and plants both develop over time.

**Unlock even more  
knowledge by visiting:**

<https://science4fun.info/plants/>

<https://www.dkfindout.com/uk/animals-and-nature/plants/>

<https://www.sciencekids.co.nz/plants.html>

**Unlock even more science experiment  
fun by visiting:**

[https://www.lovemyscience.com/cat\\_plants.html](https://www.lovemyscience.com/cat_plants.html)